



Model # AT28263+APC.DP22.DTS30 Shown

KEY FEATURES:

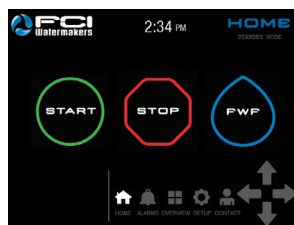
- Spot-free water from seawater or dockside water
- 3-in-1 System saves in cost and installation
- Fully Automated in all 3 modes of operation: Seawater, Double-pass, and Dockside modes
- Auto-adjusts to global feed water conditions
- Marine-certified 7" Display with one-touch operation
- NEMA 4x Rated V4 Control Valving and Protection
- Noise-dampening 8-point Vibration Isolation Mounts and Open Frame design contribute to the industry's quietest operating system
- Continuous duty rated

YOUR SMALL, MIGHTY AND SPOT-FREE COMMERCIAL SOLUTION.

The industry's most dependable watermaker and spot-free Dockside Treatment System—DTS, in one compact commercial system. This all-inclusive system saves up to 40% on initial equipment cost, and 50% less on the installation cost of multiple components. It has all the working benefits of its much larger, industrial Neptune+ sibling with spot-free rinsing capabilities. The Atlas+APC/DTS is fully automated, self-adjusting, and features the industry's only marine-certified hi-res touch screen panel, which allows you to choose amongst 3 modes: **Seawater** (seawater to purified water), **Double-pass** (seawater to spot-free), or **Dockside** (municipal to spot-free). Our exclusive, intuitive V4 controls allow you to customize your system, and switch modes with one touch. The heart of the system is a durable wash-down duty, 5 HP motor and a robust 316 stainless steel high pressure pump that allow for extended run times. The Series produces 2,000–3,600 GPD, and is upgradeable throughout the series. The included carbon and sediment pre-filtration optimizes membrane life, resulting in less maintenance and lower operating costs. The DTS removes up to 99.8% of total dissolved solids (TDS), allowing surfaces to air-dry without leaving water spots. Spend less time wiping down surfaces, and relish the benefits of spot-free wash-downs to maintain and extend the life of your finished surfaces and gear.



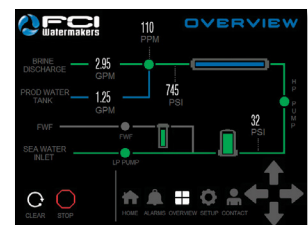
ROBUST PUMP AND MOTOR DRIVE
Extended-duty, 316 stainless steel commercial High-Pressure Pump.



HMI TOUCH CONTROLS
Simple one-touch operation, and intuitive interface.



EASY SETUP AND CONFIGURATION
Icons and simple navigation make customizing your system effortless.

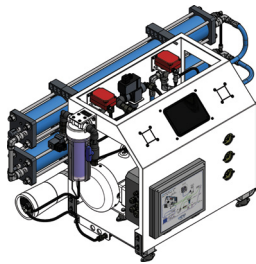


QUICK VIEW – Monitor system operation and operational stats, or connect via MODBUS.

FEATURES

- PUMP & MOTORS: TEFC**
Continuous-duty washdown rated motors with 316SS shaft, and sealed maintenance-free bearings for long life applications. Closed impeller design offers 50% more pressure efficiency over standard pumps.
- 7" TOUCH SCREEN: Hi-resolution, marine-grade and bridge certified.**
- STANDARD GAC FILTER: Chlorine protection from dock water source.**
- ELECTRICAL: NEMA 4X rated enclosure.**
- PRESSURE GAUGES & FLOW METERS: Visual indicators aid troubleshooting.**
- FRESH WATER FLUSH: Schedule automated flushes through the V4 Control System.**
- PRODUCT VESSELS: 316SS product/pressure ports, and FDA/NSF51 fittings used on product water.**
- FRESH WATER VESSEL: Auto-directs to produce spot-free water in DTS and Double-pass modes.**
- HIGH PRESSURE PUMP: Extended-duty 316SS HP pump.**
- PRE-FILTER: 40 sq. ft. of pleated filter with PVC core in addition to pressure monitoring and alarming.**
- SHOCK MOUNTS & OPEN FRAME DESIGN: Reduce noise and vibration.**
- AUTOMATED CONTROL VALVES: Automatically diverts water for Sea Water, Double-pass, and Dockside modes with a single touch.**

DIMENSIONS



UNIT WIDTH

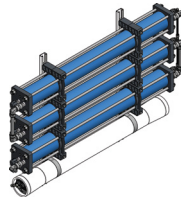
Frame Only	31.10 in / 789.94 mm
Frame + FWF Filter	37.10 in / 942.34 mm
2000-2500 GPD	47.00 in / 1193.80 mm
2800 GPD	54.70 in / 1389.38 mm

UNIT DEPTH

Frame Only	20.30 in / 515.62 mm
2000-2500 + Membranes	25.20 in / 640.08 mm
2800 + Membranes	26.60 in / 675.64 mm

UNIT HEIGHT

Frame	26.60 in / 675.54 mm
-------	----------------------



3600 GPD PRESSURE VESSEL W/ BRACKET

Width	54.70 in / 1389.38 mm
Depth	6.80 in / 172.72 mm
Height	35.00 in / 889.00 mm

NOTE: 3600 GPD Pressure Vessels are not attached to the Frame.



COMMERCIAL PRE-FILTER

Width	11.10 in / 281.94 mm
Depth	9.60 in / 243.83 mm
Height	20.50 in / 520.70 mm

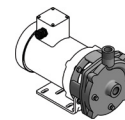
AVAILABLE PRODUCT OPTION



V4 REMOTE 7"

Width	8.04 in / 204.22 mm
Depth	2.13 in / 54.10 mm
Height	5.64 in / 143.26 mm

4.3" V4 Remote (#93-7224) also available.



LP PUMP

Width	6.90 in / 175.26 mm
Depth	13.50 in / 342.90 mm
Height	9.15 in / 232.41 mm

REQUIREMENTS

UTILITIES

Inlet	Brine	Product	FWF
3/4" FNPT	5/8" Tube	1/2" Tube	1/2" Tube

ELECTRICAL

HP	KW	VAC	HZ	PH
5	4.47	208-240 / 380 / 480	50 / 60	1 / 3

MODEL

MODEL	Weight (LBS / KG)	Seawater (GPD / LPD)	Double-Pass (GPD / LPD)	DTS (GPD / LPD)	Fully Automated	316SS High Pressure Pump	2.5" Vessel	4" Vessel
AT20263+APC.DP14.DTS30	250 / 113.40	2000 / 7570.82	1400 / 5299.58	3000 / 11356.20	☑	☑	☑	
AT25263+APC.DP18.DTS30	265 / 120.20	2500 / 9463.53	1800 / 6813.74	3000 / 11356.20	☑	☑	☑	
AT28263+APC.DP22.DTS30	350 / 158.76	2800 / 10599.20	2200 / 8327.91	3000 / 11356.20	☑	☑		☑
AT36263+APC.DP26.DTS30	385 / 174.63	3600 / 13627.50	2600 / 9842.07	3000 / 11356.20	☑	☑		☑

System Rated Based on Typical Sea Water Conditions: Temperature 77° F / 25° C | TDS 32,000 | Pressure 825 PSI

System Rated Based on Typical Dock Water Conditions: Temperature 77° F / 25° C | TDS 500 | Pressure 125 PSI

System Conversion on Dock Water: Up to 1000 PPM | Chlorine Tolerance > 0.1

The Filtration Concepts Incorporated, dba FCI Watermakers, General Terms and Conditions of Sale and applicable Warranty are incorporated herein and applicable to this Product. FCI's Customer Service Department can provide Purchaser with a copy of the General Terms and Conditions of Sale upon request.

©2026 FCI Watermakers