



Model # AT25263+APC Shown

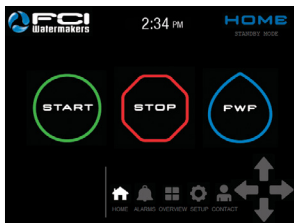
KEY FEATURES:

- 1 HP 316SS Feed Pump
- 40 sq ft of 5 Micron Filtration
- Robust 316SS HP Pump
- Wash-down Duty Motors
- Dual Shockmounting
- Exclusive V4 Control System
- Marine Certified HMI Touch Screen
- One-Piece Aluminum Powder Coated Frame Construction
- Fully Automatic Operation with APC
- Entire Series Is Upgradeable To 3,600 GPD

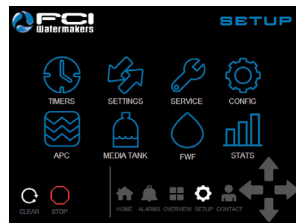
BRIDGING THE GAP
BETWEEN SMALL AND MIGHTY.

The Atlas+ Series is the most compact commercial system FCI has to offer. Built on the smaller, marine Max-Q+ platform, it has all the working benefits of its much larger, industrial Neptune+ sibling. The Atlas+ Series is capable of producing 1,400–3,600 GPD, and is upgradeable throughout the series. The Automated Pressure Control (APC) with manual override puts making pure fresh water, literally, a touch away. At the heart of the system is a durable wash-down duty, 5 HP motor and a robust 316 stainless steel high pressure pump that allow for extended run times. When installation space or generator size is limited, the Atlas+ Series truly encompasses the best of both pleasure boating and commercial worlds.

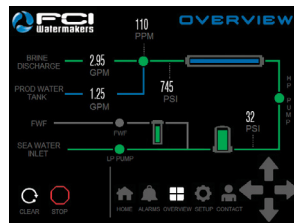
For nearly three decades, FCI Watermakers has been pioneering technologies and manufacturing the most reliable, trouble-free watermaking systems for the offshore and boating industries. Each unit is manufactured and live-tested in our facility. Your system comes with peace of mind, and a readily available customer service and technical support team. Our worldwide service network ensures proper maintenance, and unrivaled satisfaction.



HMI TOUCH CONTROLS
Simple one-touch operation, and intuitive interface.



EASY SETUP AND CONFIGURATION
Icons and simple navigation make customizing your system effortless.



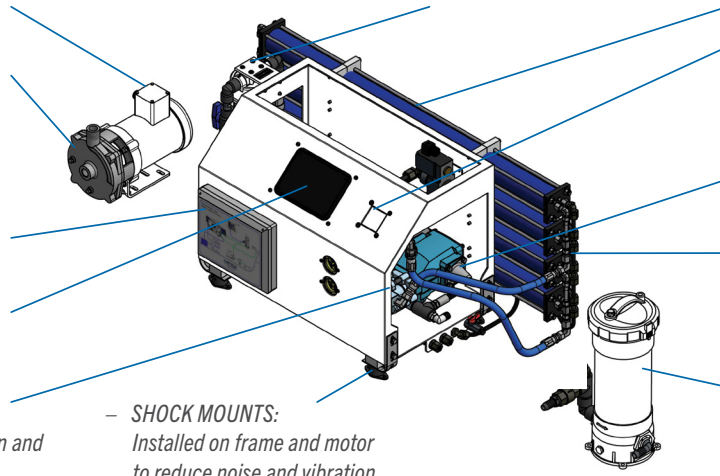
QUICK VIEW – Monitor system operation and operational stats, or connect via MODBUS.



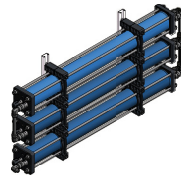
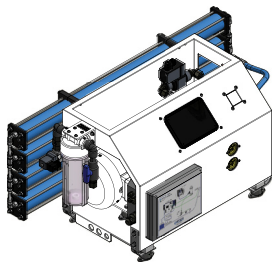
ROBUST PUMP AND MOTOR DRIVE
Extended-duty, 316 stainless steel commercial High-Pressure Pump.

FEATURES

- **MOTORS:** TEFC continuous-duty washdown rated motors with 316SS shaft, and sealed maintenance-free bearings for long life applications.
- **LP FEED PUMP:** Closed impeller design offers 50% more pressure efficiency over standard pumps.
- **ELECTRICAL:** NEMA 4X rated enclosure.
- **HMI TOUCH SCREEN:** 7" High-resolution, Marine Grade and Bridge Certified.
- **OPEN FRAME DESIGN:** Allows easy visual inspection and access for maintenance.
- **FRESH WATER FLUSH:** Schedule automated flushes through the V4 Control.
- **MEMBRANES:** High Rejection non-proprietary membranes used to obtain the highest quality of product water.
- **AUTOMATIC PRESSURE CONTROL (APC):** Auto-adjusts system pressure to feed water conditions.
- **HIGH PRESSURE PUMP:** Extended-duty 316SS HP pump.
- **PRODUCT VESSELS:** 316 SS product/pressure ports, and FDA/NSF-51 fittings used on the product water.
- **PRE-FILTER:** 40 sq. ft. of pleated filter with PVC core in addition to pressure monitoring and alarming.
- **SHOCK MOUNTS:** Installed on frame and motor to reduce noise and vibration.



DIMENSIONS



3600 GPD PRESSURE VESSEL W/ BRACKET

Width	54.70 in / 1389.38 mm
Depth	6.80 in / 172.72 mm
Height	27.20 in / 690.88 mm

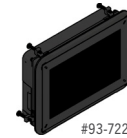
NOTE: 3600 GPD Pressure Vessels are not attached to the Frame.



COMMERCIAL PRE-FILTER

Width	11.10 in / 281.94 mm
Depth	9.60 in / 243.83 mm
Height	20.50 in / 520.70 mm

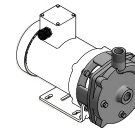
AVAILABLE PRODUCT OPTION



V4 REMOTE 7"

Width	8.04 in / 204.22 mm
Depth	2.13 in / 54.10 mm
Height	5.64 in / 143.26 mm

4.3" V4 Remote (#93-7224) also available.



LP PUMP

Width	6.90 in / 175.26 mm
Depth	13.50 in / 342.90 mm
Height	9.15 in / 232.41 mm

UNIT WIDTH

Frame Only	31.10 in / 789.94 mm
Frame + FWF Filter	37.10 in / 942.34 mm
1400-2500 GPD	47.00 in / 1193.80 mm
2800 GPD	54.70 in / 1389.38 mm

UNIT DEPTH

Frame Only	18.30 in / 464.82 mm
2000-2500 + Membranes	22.30 in / 566.42 mm
2800 + Membranes	24.30 in / 617.22 mm

UNIT HEIGHT

Frame	20.60 in / 523.24 mm
-------	----------------------

REQUIREMENTS

UTILITIES

Inlet	Brine	Product	FWF
3/4" FNPT	5/8" Tube	1/2" Tube	1/2" Tube

ELECTRICAL

HP	KW	VAC	HZ	PH
5	4.47	208-240 / 380 / 480	50 / 60	1 / 3

MODEL

Manual / Auto (Pressure Control)	Weight (LBS / KG)	Seawater (GPD / LPD)	Seawater (GPH / LPH)	Commercial Filter Standard	316SS High Pressure Pump	2.5" Vessel	4.0" Vessel	V4 Control System
AT14263+ / AT14263+APC	212 / 96.16	1400 / 5299.58	58.33 / 220.80	⊗	⊗	⊗		⊗
AT20263+ / AT20263+APC	226 / 102.51	2000 / 7570.82	83.33 / 315.44	⊗	⊗	⊗		⊗
AT25263+ / AT25263+APC	240 / 108.86	2500 / 9463.53	104.17 / 394.33	⊗	⊗	⊗		⊗
AT28263+ / AT28263+APC	326 / 147.87	2800 / 10599.20	116.67 / 441.64	⊗	⊗		⊗	⊗
AT36263+ / AT36263+APC	369 / 167.38	3600 / 13627.50	150.00 / 567.81	⊗	⊗		⊗	⊗

System Rated Based on Typical Sea Water Conditions: Temperature 77° F / 25° C | TDS 32,000 | Pressure 825 PSI