



Model # DTS+Solo-3000 Shown

KEY FEATURES:

- Purified dock water for drinking and cooking with no equipment needed on the dock
- Spot-free wash-down saves time, with no need to chamois-dry surfaces while extending the life of your vessel's paint and wax
- Removes viruses, bacteria and cysts
- Recover up to 80% of processed water with an adjustable recycle rate
- Extremely low power consumption with compact, space-saving design: wall or deck mounting
- Pumps and motors included
- Optional Double-pass (DP) allows Spot-free water at sea from your Watermaker, and is compatible with any Watermaker brand

PURIFY DOCK WATER WITH ONE CONVENIENT UNIT

This self-contained dockside water purifying unit produces fresh drinking and cooking water from your dockside source. The FCI DTS+SOLO encompasses all of the qualities and reliability you have come to know with FCI Watermakers. Multiple frame configurations and compact design allows it to fit nearly anywhere on your vessel. The included sediment filter and GAC are optimized for extended membrane life, which means less maintenance, lower operating cost, and ultimately more enjoyment out on the water. Spend less or no time wiping down. The technologically advanced system removes up to 99% of Total Dissolved Solids (TDS), which leads to a completely spot-free wash, and increases the life of your vessel's paint and wax finish. The optional Double-pass feature allows you to make Spot-free water at sea using your existing Watermaker, no matter the brand. But when integrated with an FCI Watermaker, the FCI V4 Control System provides fully automatic operation and control.



FRESH CLEAN WATER
 With proven reliability, your FCI DTS provides pure drinking and cooking water from your dockside source.

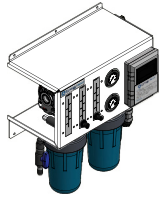


ZERO EQUIPMENT ON THE DOCK
 Enjoy spot-free wash-downs, and extend the life of your vessel's finish without the need to chamois-dry.



HMI REMOTE DISPLAY
 The optional display allows remote operation with simple one-touch controls, and intuitive interface.

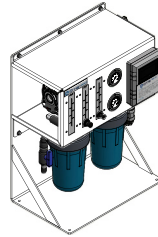
DIMENSIONS



WALL MOUNT

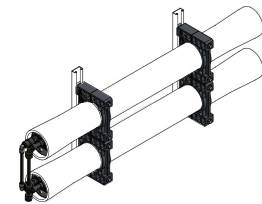
Width	23.42 in / 594.87 mm
Depth	13.96 in / 354.58 mm
Height	26.59 in / 675.39 mm

NOTE: Deck Mount conversion bracket available (# 90-5382).



DECK MOUNT

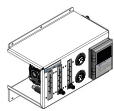
Width	23.42 in / 594.87 mm
Depth	14.44 in / 366.78 mm
Height	30.00 in / 762.00 mm



PRESSURE VESSELS

Width	48.69 in / 1236.73 mm
Depth	7.11 in / 180.59 mm
Height	11.50 in / 292.10 mm (1) 19.30 in / 490.22 mm (2)

MODULAR MOUNT COMPONENTS



MODULAR CONTROL PANEL

Width	23.42 in / 594.87 mm
Depth	13.96 in / 354.58 mm
Height	16.93 in / 430.02 mm



MODULAR GAC / PRE-FILTER

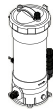
Width	22.24 in / 564.90 mm
Depth	7.13 in / 181.10 mm
Height	13.93 in / 353.82 mm



PRESSURE VESSELS

Width	48.69 in / 1236.73 mm
Depth	7.11 in / 180.59 mm
Height	11.50 in / 292.10 mm (1) 19.30 in / 490.22 mm (2)

AVAILABLE PRODUCT OPTIONS



DOUBLE-PASS HOUSING

Width	9.16 in / 232.66 mm
Depth	6.12 in / 155.45 mm
Height	8.28 in / 210.31 mm

Included when ordered with -DP



DOUBLE-PASS HOUSING w/ V4 INTEGRATION

Width	9.16 in / 232.66 mm
Depth	6.12 in / 155.45 mm
Height	8.28 in / 210.31 mm

Included when ordered with -DP-V4



#93-7226

DTS+ SOLO REMOTE

Width	5.71 in / 145.03 mm
Depth	2.13 in / 54.10 mm
Height	4.09 in / 103.89 mm

REQUIREMENTS

UTILITIES

Inlet	Brine	Product	FWF
3/4" HB	1/2" Tube	3/8" Tube	1/2" Tube

ELECTRICAL

HP	KW	VAC	HZ	PH
0.75	0.56	120 / 208-240	50 / 60	1

MODEL

MODEL	Converts Dockwater to Spot-free Water	Converts Watermaker Water to Spot-Free Water	Double-pass is compatible with any watermaker brand	Double-pass Integrates with FCI V4 Control	Auto Start / Stop with Pressure	HMI / PLC Touch Screen Control	2000 GPD Rated	3000 GPD Rated	316SS High Pressure Pump	Adjustable up to 70% Recycle Rate
DTS+SOLO-2000	☑				☑	☑	☑		☑	☑
DTS+SOLO-3000	☑				☑	☑		☑	☑	☑
DTS+SOLO-DP-2000	☑	☑	☑		☑	☑	☑		☑	☑
DTS+SOLO-DP-3000	☑	☑	☑		☑	☑		☑	☑	☑
DTS+SOLO-DP-V4-2000	☑	☑		☑	☑	☑	☑		☑	☑
DTS+SOLO-DP-V4-3000	☑	☑		☑	☑	☑		☑	☑	☑

System Rated Based on Typical Dock Water Conditions: Temperature 77° F / 25° C | TDS 500 | Pressure 125 PSI
 System Conversion on Dock Water: Up to 1000 PPM | Chlorine Tolerance > 0.1
 System Voltage Selection: 120 / 208-240 VAC | 50 / 60 Hz | 1 PH

The Filtration Concepts Incorporated, dba FCI Watermakers, General Terms and Conditions of Sale and applicable Warranty are incorporated herein and applicable to this Product. FCI's Customer Service Department can provide Purchaser with a copy of the General Terms and Conditions of Sale upon request.