



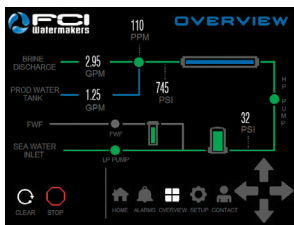
Model # NV58263+APC Shown

KEY FEATURES:

- 7" High Resolution HMI Touch Screen that is Marine Grade and Bridge Certified
- Marine Duty Direct Drive Gearbox
- APC Fully Automated Operation and Pressure Control
- 80 sq. ft. pleated Pre-filter cartridge
- Fully Automated Fresh Water Flush System
- Also available in Horizontal and Modular configurations for flexible installation options.

**SUPERIOR QUALITY AND
RELIABILITY YOU CAN TOUCH.**

Since its inception, the FCI Neptune+ Series has been recognized for its high efficiency and extreme reliability. With output capacities ranging from 3,400 to 10,000 GPD and a dependable Direct Drive High Pressure Pump, it has proven to be a dependable workhorse by utilizing premium components: 316SS pumps, commercial filtration, NEMA 4X electrical enclosures, pressure vessels with 6x the safety factor, and industry-leading certified control systems. Coupling the corresponding media filtration skid with Neptune's built-in Automated Pressure Control creates the optimum system, putting automated watermaking at your fingertips. Horizontal and Modular configurations are also available to accommodate your space and installation requirements. All configurations are ideal for commercial vessels, island homes, oil platforms, hotels, or large yachts.



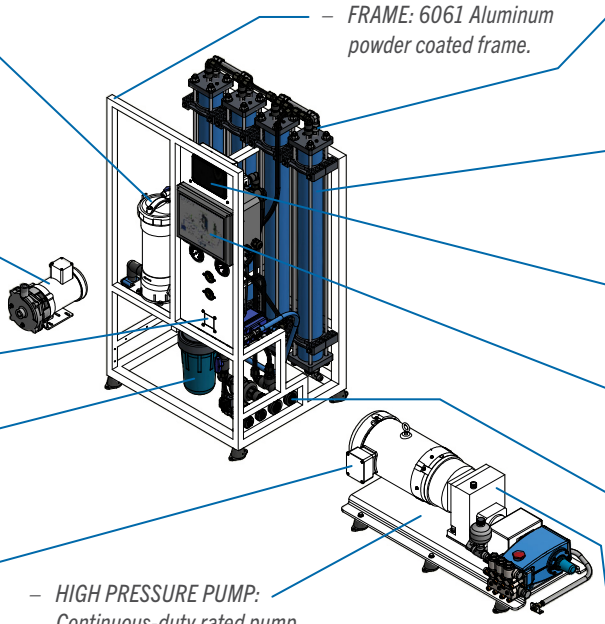
*Simple one-touch operation,
and reliable Direct Drive Pump.*

RELIABILITY AND COMPLETE AUTOMATION AT YOUR FINGERTIPS. FCI's next generation V4 controller and interface allows customization of your watermaker through intuitive advanced touch screen controls. Our monitors' higher heat tolerance and system design allow them to work in the harshest environments. FCI touch screen controllers can be installed with confidence, because they are Bridge Classified for marine use with Type Approval Certifications from: ABS, GL, Lloyd's Register EMEA, Det Norske Veritas, and Russian Maritime Register of Shipping. Rest assured, our V4 control will reliably perform for your application, and is rugged enough to last in your environment.

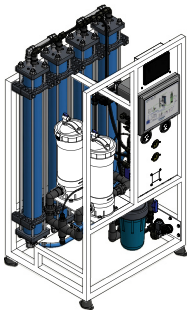
FCI has been manufacturing Watermakers and water purification equipment for over three decades. To ensure we exceed your expectations, we design, manufacture, program and test our units in-house for optimum quality control. Know that a company specializing in only Watermakers is here for you.

FEATURES

- **PRE-FILTER:** 80 Sq. Ft. of pleated filter with PVC core in addition to pressure monitoring and alarming.
- **PRESSURE GAUGES & FLOW METERS:** Provides visual indication of critical information to aid troubleshooting.
- **LOW PRESSURE PUMP:** 316SS closed impeller design offers 50% more pressure efficiency over standard pumps.
- **APC:** Automatic Pressure Control automatically adjusts system pressure to feed water conditions.
- **FRESH WATER FLUSH:** Schedule automated flushes through the V4 Control System.
- **MOTOR:** TEFC continuous-duty wash down rated motor with 316SS shaft and sealed bearings for maintenance-free long life application.
- **FRAME:** 6061 Aluminum powder coated frame.
- **PRODUCT VESSELS:** 316SS product/pressure ports, and FDA/NSF-51 fittings used on the product water.
- **MEMBRANES:** High Rejection non-proprietary membranes used to obtain the highest quality of product water.
- **HMI TOUCH SCREEN:** 7" High-resolution, Marine Grade and Bridge Certified.
- **ELECTRICAL:** NEMA 4X rated enclosure with overload protection on low and high pressure pump.
- **CONNECTIONS:** Easy access, can be setup on left or right (standard) side of system.
- **DIRECT DRIVE MOTOR GEARBOX:** Marine Grade, continuous-duty with no belts to adjust, align or replace.
- **HIGH PRESSURE PUMP:** Continuous-duty rated pump with 316SS components.



DIMENSIONS

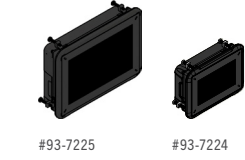


UNIT

Width	31.00 in / 787.40 mm
Depth (3400-5800 GPD)	25.50 in / 647.70 mm
Depth (7200-10000 GPD)	31.90 in / 810.00 mm
Height	58.60 in / 1488.44 mm

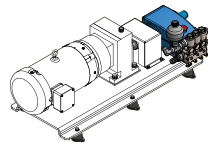
AVAILABLE PRODUCT OPTION

	V4 REMOTE	7"	4.3"
Width	8.04 in / 204.22 mm	5.71 in / 145.03 mm	
Depth	2.13 in / 54.10 mm	2.13 in / 54.10 mm	
Height	5.64 in / 143.26 mm	4.09 in / 103.89 mm	



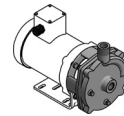
HP PUMP

Width	48.50 in / 1231.90 mm
Depth	18.60 in / 472.44 mm
Height	16.10 in / 408.94 mm



LP PUMP

Width	6.90 in / 175.26 mm
Depth	13.50 in / 342.90 mm
Height	9.15 in / 231.41 mm



REQUIREMENTS

UTILITIES

Inlet	Brine	Product	FWF
1" FNPT	1" FNPT	1/2" FNPT	1/2" FNPT

ELECTRICAL

HP	KW	VAC	HZ	PH
10	8.20	208-240 / 380 / 480	50 / 60	1 / 3

MODEL

Manual / Auto (Pressure Control)	Weight (LBS / KG)	Seawater (GPD / LPD)	Seawater (GPH / LPH)	M3	316SS High Pressure Pump	V4 Control	Fully Automated Option	Extended Frame Dimension
NV34263+ / NV34263+APC	790 / 358.34	3400 / 12870.40	141.67 / 536.28	12.87	☑	☑	☑	
NV46263+ / NV46263+APC	820 / 371.95	4600 / 17412.89	191.67 / 725.55	17.41	☑	☑	☑	
NV58263+ / NV58263+APC	850 / 385.55	5800 / 21955.39	241.67 / 914.82	21.96	☑	☑	☑	
NV72263+ / NV72263+APC	880 / 399.16	7200 / 27255.96	300.00 / 1135.62	27.25	☑	☑	☑	☑
NV80263+ / NV80263+APC	910 / 412.77	8000 / 30283.29	333.33 / 1261.79	30.28	☑	☑	☑	☑
NV90263+ / NV90263+APC	940 / 426.38	9000 / 34068.71	375.00 / 1419.53	34.07	☑	☑	☑	☑
NV100263+ / NV100263+APC	970 / 439.99	10000 / 37854.12	416.67 / 1577.27	37.85	☑	☑	☑	☑

System Rated Based on Typical Sea Water Conditions: Temperature 77°F / 25°C | 32,000 TDS | Pressure 825 PSI

The Filtration Concepts Incorporated, dba FCI Watermakers, General Terms and Conditions of Sale and applicable Warranty are incorporated herein and applicable to this Product. FCI's Customer Service Department can provide Purchaser with a copy of the General Terms and Conditions of Sale upon request.